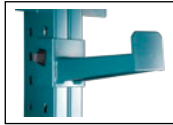


CANTILEVER BAR-STOCK RACKING

LIGHT-DUTY

- All-welded components assemble easily
- Seven 12" adjustable arms per column side
- Capacity per level: 1000 lbs.
- Dim.: 36" W x 18 1/4" D x 75" H
- Shipped knocked down
- **FOB Concord, ONT**



REGULAR-DUTY

- Ideal for storing of steel, iron, aluminum, wood or plastic pipe
- All-welded components assemble easily
- Seven 14" adjustable arms per column side
- Capacity per level: 2000 lbs.
- Dim.: 36" W or 72" W x 21" D x 84" H
- Shipped knocked down
- **FOB Concord, ONT**



LIGHT-DUTY

Model No.	Description	Capacity lbs./column	Wt. lbs.	Price /Each
RL730	Single Sided	7000	306	
RL731	Double Sided	14 000	434	

REGULAR-DUTY

Model No.	Description	Width"	Capacity lbs./column	Wt. lbs.	Price /Each
STARTER					
RL732	Single-Sided	36	14 000	315	
RL734	Double-Sided	36	28 000	452	
RL736	Single-Sided	72	14 000	329	
RL738	Double-Sided	72	28 000	466	

ADD-ON

RL733	Single-Sided	36	7000	168	
RL735	Double-Sided	36	14 000	236	
RL737	Single-Sided	72	7000	182	
RL739	Double-Sided	72	14 000	250	

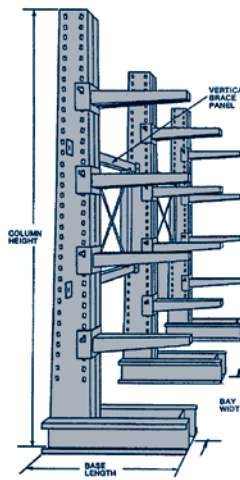
HEAVY-DUTY ADJUSTABLE CANTILEVER RACKING



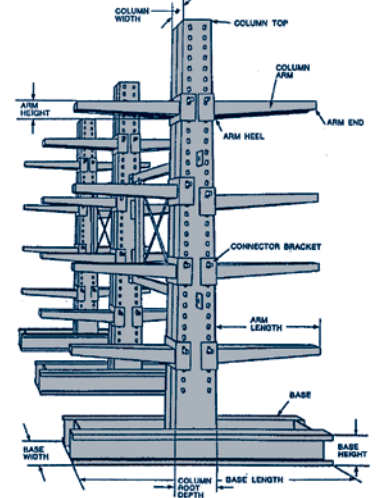
- Pre-designed and engineered free-standing systems
- Each kit consist of 3 basic components: single or double sided columns, arms and braces
- Column centres are set at 51"
- 3 arms per column for single sided units and 6 arms per column double sided units
- All welded components that are easily assembled
- Tapered columns eliminate deflection of rack into the aisles
- Tapered arms never deflect below horizontal
- Arms easily adjust to any vertical height on 3" centres
- **FOB Concord, Ontario**



Single Side



Double Side



OTHER OPTIONAL ARMS

Lip Stop



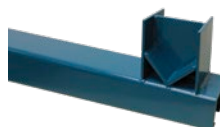
Flat plate front end lip stops prevent loose materials from rolling off.

Removable Pipes & Sockets



Safely contain broken bundles for elevations that are safely reached from the ground only.

Reel Adapters



- Available for reels with diameters of up to 80" and 15 000 lbs.
- Allows easy access to load and unload the coils
- Can be used with automated wire/cable puller equipment

Column Height'	Number of Columns	Arm Length"	Length of Material Stored'	Capacity Per /Level	Single Sided Unit Model No.	Price /Each	Double Sided Unit Model No.	Price /Each
8	2	24	5 to 8	4500	RL676		RL703	
8	3	24	9 to 12	5500	RL677		RL704	
8	4	24	13 to 16	8000	RL678		RL705	
8	2	36	5 to 8	4000	RL685		RL712	
8	3	36	9 to 12	4500	RL686		RL713	
8	4	36	13 to 16	6500	RL687		RL714	
8	2	48	5 to 8	3000	RL694		RL721	
8	3	48	9 to 12	3500	RL695		RL722	
8	4	48	13 to 16	5000	RL696		RL723	
10	2	24	5 to 8	4500	RL679		RL706	
10	3	24	9 to 12	5500	RL680		RL707	
10	4	24	13 to 16	8000	RL681		RL708	
10	2	36	5 to 8	4000	RL688		RL715	
10	3	36	9 to 12	4500	RL689		RL716	
10	4	36	13 to 16	6500	RL690		RL717	
10	2	48	5 to 8	3000	RL697		RL724	
10	3	48	9 to 12	3500	RL698		RL725	
10	4	48	13 to 16	5000	RL699		RL726	
12	2	24	5 to 8	4500	RL682		RL709	
12	3	24	9 to 12	5500	RL683		RL710	
12	4	24	13 to 16	8000	RL684		RL711	
12	2	36	5 to 8	4000	RL691		RL718	
12	3	36	9 to 12	4500	RL692		RL719	
12	4	36	13 to 16	6500	RL693		RL720	
12	2	48	5 to 8	3000	RL700		RL727	
12	3	48	9 to 12	3500	RL701		RL728	
12	4	48	13 to 16	5000	RL702		RL729	

Custom sizes available. Contact your Material Handling Specialist today for the most efficient and economical rack design and layout with thousands of possible column and arm combinations to suit our specific application.