

SCREWDRIVERS, INSERT BITS & HEX KEYS

1/4" PHILLIPS INSERT BITS



APEX

Model No.	Mfg. No.	Point Size	Overall Length"	Price /Each
UQ420	440-1X	1	1.00	
UQ421	440-115	1	1.50	
UQ422	440-12	1	2.00	
UQ423	440-125	1	2.50	
UQ425	440-2X	2	1.00	
UQ427	440-215X	2	1.50	
UQ428	440-22X	2	2.00	
UQ429	440-225X	2	2.50	
UQ430	440-23	2	3.00	
UQ431	440-24	2	4.00	
UQ433	440-26	2	6.00	
UQ434	440-3X	3	1.00	
UQ435	440-3125	3	1.25	
UQ436*	440-3BNX	3	1.25	
UQ437	440-32X	3	2.00	
UQ438	440-325	3	2.50	
UQ439	440-33	3	3.00	
UQ440	440-34	3	4.00	
UQ441	440-4X	4	1.31	

* Large body

1/4" PHILLIPS INSERT BITS, LIMITED CLEARANCE



APEX

Model No.	Mfg. No.	Point Size	Overall Length"	Turned Length"	Price /Each
UQ442	446-0	0	1.00	0.44	
UQ443	446-1X	1	1.00	0.44	
UQ444	446-12	1	2.00	0.44	
UQ446	446-2X	2	1.00	0.44	
UQ447	446-27	2	1.00	0.44	
UQ448	446-215	2	1.50	0.44	
UQ449	446-22	2	2.00	0.44	
UQ450	446-215T	2	1.50	1.00	
UQ451	446-22TX	2	2.00	1.50	
UQ452	446-225T	2	2.50	1.75	
UQ453	446-23T	2	3.00	2.25	

1/4" SQUARE RECESS INSERT BITS



APEX

Model No.	Mfg. No.	Point Size	Overall Length"	Price /Each
UQ519	950-0X	0	1.00	
UQ520	950-1	1	1.00	
UQ521	950-2	2	1.00	
UQ522	950-3X	3	1.00	

1/4" SLOT INSERT BITS, LIMITED CLEARANCE



APEX

Model No.	Mfg. No.	Screw Size	Overall Length"	Blade Width"	Price /Each
UQ561	445-000	1F-2R	1.00	0.125	
UQ562	445-00	2F-3R	1.00	0.140	
UQ563	445-0	3F-4R	1.00	0.154	
UQ564	445-10	4F-5R	1.00	0.185	
UQ565	445-20	5F-6R	1.00	0.216	
UQ566	445-30	6F-7R	1.00	0.248	
UQ567	445-00-15	2F-3R	1.50	0.138	
UQ568	445-0-15	3F-4R	1.50	0.154	
UQ570	445-20-15	5F-6R	1.50	0.216	
UQ571	445-30-15	6F-7R	1.50	0.248	

1/4" PHILLIPS POWER DRIVES, ACR



APEX

Model No.	Mfg. No.	Point Size	Overall Length"	Turned Length"	Price /Each
UQ866	491-ACR1	1	1.94	1.25	
UQ867	492-ACR2-R	2	1.94	1.25	
UQ868	492-ACR2-D	2	1.94	1.25	
UQ869	492-ACR2	2	1.94	1.25	
UQ871	492-A-ACR2-D	2	2.75	2.00	
UQ872	492-A-ACR2	2	2.75	2.00	
UQ874	492-B-ACR2-D	2	3.50	2.75	
UQ875	492-B-ACR2	2	3.50	2.75	
UQ878	493-ACR3	3	1.94	1.00	

1/4" PHILLIPS POWER DRIVES



APEX

Model No.	Mfg. No.	Point Size	Overall Length"	Turned Length"	Price /Each
UQ475	4910	0	1.94	1.25	
UQ476	4910-A	0	2.75	2.00	
UQ477	4910-B	0	3.50	2.75	
UQ478	4910-C	0	6.00	2.00	
UQ479	491	1	1.94	1.25	
UQ480	491-A	1	2.75	2.00	
UQ481	491-B	1	3.50	2.75	
UQ482	491-C	1	6.00	2.00	
UQ483	491-CC	1	6.00	5.25	
UQ484	492	2	1.94	1.25	
UQ485	492-A	2	2.75	2.00	
UQ486	492-B	2	3.50	2.75	
UQ487	492-C	2	6.00	2.00	
UQ488	492-CX	2	6.00	5.25	
UQ489*	492-27	2	1.94	1.25	
UQ490*	492-A-27	2	2.75	2.00	
UQ491*	492-B-27	2	3.50	2.75	
UQ492*	492-C-27	2	6.00	2.00	
UQ493*	492-CC-27	2	6.00	5.25	
UQ494	492-200MM	2	7.81	7.00	
UQ495	SD-2052-8	2	8.00	7.00	
UQ496	SD-2052-10	2	10.00	9.00	
UQ497	493	3	1.94	1.00	
UQ498	493-A	3	2.75	1.75	
UQ499	493-BX	3	3.50	2.50	
UQ500	493-C	3	6.00	5.00	
UQ501	4930	3	1.94	1.25	
UQ502	4930-A	3	2.75	2.00	
UQ503	4930-B	3	3.50	2.75	
UQ504	4930-C	3	6.00	2.00	
UQ505	4930-CC	3	6.00	5.25	
UQ506	494	4	1.94	1.00	

* For shallow recess screws

1/4" PHILLIPS BITS, ACR



APEX

Model No.	Mfg. No.	Point Size	Overall Length"	Type	Price /Each
UQ454	440-1-ACR1-R	1	1.00	Removal	
UQ455	440-1-ACR1-D	1	1.00	Driving	
UQ456	440-1-ACR1	1	1.00	Both	
UQ457	440-2-ACR2-R	2	1.00	Removal	
UQ458	440-2-ACR2-D	2	1.00	Driving	
UQ459	440-2-ACR2	2	1.00	Both	
UQ460*	446-2-ACR2-D	2	1.00	Driving	
UQ461	440-22-ACR2-R	2	2.00	Removal	
UQ463	440-22-ACR2	2	2.00	Both	
UQ464	440-3-ACR3-RX	3	1.00	Removal	
UQ465	440-3-ACR3-D	3	1.00	Driving	
UQ466	440-3-ACR3	3	1.00	Both	

* Limited clearance

1/4" POSIDRIV® INSERT BITS



APEX

Model No.	Mfg. No.	Point Size	Overall Length"	Price /Each
UQ467	440-1-PZD	1	1.00	
UQ469	440-2-PZDX	2	1.00	
UQ470	440-215-PZD	2	1.50	
UQ471	440-22-PZD	2	2.00	
UQ473	440-3-PZD	3	1.00	
UQ474	440-4-PZD	4	1.25	

1/4" POSIDRIV® POWER DRIVE BITS



APEX

Model No.	Mfg. No.	Point Size	Overall Length"	Turned Length"	Price /Each
UQ507	491-PZD	1	1.94	1.25	
UQ508	491-A-PZD	1	2.75	2.00	
UQ509	491-B-PZD	1	3.50	2.75	
UQ510	491-C-PZD	1	6.00	2.00	
UQ511	492-PZD	2	1.94	1.25	
UQ512	492-A-PZD	2	2.75	2.00	
UQ513	492-B-PZD	2	3.50	2.75	
UQ514	492-C-PZD	2	6.00	2.00	
UQ515	493-PZD	3	1.94	1.00	
UQ516	493-A-PZD	3	2.75	1.75	
UQ517	493-B-PZD	3	3.50	2.25	
UQ518	493-C-PZD	3	6.00	5.00	

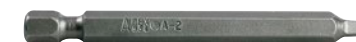
1/4" SLOT INSERT BITS



APEX

Model No.	Mfg. No.	Screw Size	Overall Length"	Turned Length"	Price /Each
UQ551	445-1	4F-5R	1.00	3/16	
UQ552	445-2	6F-8R	1.00	7/32	
UQ553	445-3	8F-10R	1.00	1/4	
UQ554	445-4	10F-12R	1.00	9/32	
UQ555	445-1-15	4F-5R	1.50	3/16	
UQ556	445-2-15	6F-8R	1.50	7/32	
UQ557	445-3-15	8F-10R	1.50	1/4	
UQ558	445-4-15	10F-12R	1.50	9/32	
UQ559	445-5	12F-14R	1.50	5/16	
UQ560	445-6	14F-16R	1.50	23/64	

1/4" SQUARE RECESS POWER BITS



APEX

Model No.	Mfg. No.	Point Size	Overall Length"	Price /Each
UQ523	954-0	0	1.94	
UQ524	954-A-0	0	2.75	
UQ526	954-C-0	0	6.00	
UQ527	954-1	1	1.94	
UQ528	954-A-1	1	2.75	
UQ529	954-B-1	1	3.50	
UQ530	954-C-1	1	6.00	
UQ531	954-2	2	1.94	
UQ532	954-A-2	2	2.75	
UQ533	954-B-2X	2	3.50	
UQ534	954-C-2	2	6.00	
UQ535	954-3X	3	1.94	
UQ536	954-A-3X	3	2.75	
UQ537	954-B-3	3	3.50	
UQ538	954-C-3X	3	6.00	